

# *In* Bloom



A Newsletter of The Water Conservation Garden

Fall/Winter 2014

Volume 4, Number 3

[www.thegarden.org](http://www.thegarden.org)

**OUR MISSION**

To educate and inspire through excellent exhibits and programs that promote water conservation and the sustainable use of related natural resources.

**BOARD OF DIRECTORS 2014**

- |  |  |
|--|--|
| <b>President</b><br>Elyssa Robertson             | <b>Vice President</b><br>Tom Allingham |
| <b>Secretary</b><br>Sue Ellen Benson             | <b>Treasurer</b><br>Harold Bailey      |
| Beverly Ireland                                  | Cheryl Minshew                         |
| Michelle LaGrandeur                              | Jan Tubiolo                            |
| Peggy Matarese                                   | Suzie Wiest                            |
| Cindy Miles                                      | Richard Wright                         |
| Luis Generoso<br>(ex officio JPA representative) |  |

**STAFF**

- |   |  |
|---|--|
| <b>Executive Director</b><br>John Bolthouse                               | <b>Education Director</b><br>Pam Meisner   |
| <b>Office and Gift Shop Manager</b><br>Heather Carlton                    | <b>Events Director</b><br>Diane Owens  |
| <b>Education Specialist</b><br>Jillian Chu                                | <b>Marketing Director</b><br>Elizabeth Ramos   |
| <b>Development Officer</b><br>Lorraine Frigolet                           | <b>Horticulture &amp; Exhibits Director</b><br>Clayton Tschudy   |
| <b>Facilities Manager</b><br>Daniel Mayorga                               | <b>Facilities Assistant</b><br>Steven Zampanti   |
| <b>Bookkeeper</b><br>Kay McGrath  |  |
| <b>NEWSLETTER Editor</b><br>Elizabeth Ramos                               | <b>Contributors</b><br>Harold Bailey<br>John Bolthouse<br>Diane Owens<br>Elizabeth Ramos<br>Carol Stevens<br>Clayton Tschudy<br>Yen Tu |
| <b>Design &amp; Layout</b><br>Julia deBeauclair                           |  |
| <b>Columnists</b><br>John Bolthouse<br>Elizabeth Ramos<br>Clayton Tschudy |  |

The Water Conservation Garden  
12122 Cuyamaca College Drive West  
El Cajon, CA 92019

Tel.: (619) 660-0614      Open daily from  
Fax: (619) 660-1687      9:00 am to 4:00 pm  
E-mail: info@thegarden.org      Free Docent Tours:  
Sat. 10:30 am

Visit us at: [www.thegarden.org](http://www.thegarden.org)

Follow The Garden on **facebook**

Cover photograph: *Aloe arborescens*

## Executive Director's Column One "Thank You" is Not Enough



There is a Chinese proverb that says when someone bestows upon you a gift, thank them seven times. For The Water Conservation Garden, the number of times that we express our gratitude is matched only by the depth of our appreciation.

In recent months, The Garden has been the beneficiary of some extraordinary support from various corners of the community. Since May, we have been honored to receive financial support from **San Diego Women's Foundation, Helix Water District, Rancho San Diego / Spring Valley Rotary, Vallecitos Water District, Palomar Unitarian Fellowship, and San Diego County.** These contributions, totaling over \$125,000, will fund a variety of programmatic initiatives and capital projects at The Garden in the coming year. Combined with the ongoing support of our members, water agency partners, and community partners, these gifts are enabling The Water Conservation Garden to become stronger than ever.

To all those who believe in The Garden and its role in the community, again, we say *thank you*.

### The Garden Becomes "Enchanted"

The Garden's first annual gala is just around the corner! Please join us on October 18 for "The Enchanted Garden," a night of sophistication, magical entertainment, and gourmet food and drink. We are pleased to announce that NBC 7's

charming meteorologist, **Dagmar Midcap**, will serve as emcee of the evening's festivities. Tickets are now available but act fast as space is limited. All proceeds from the gala will benefit The Garden.

### Drought Not Letting Up

It is likely not news to San Diegans that our region finds itself in the third year of a serious drought. While awareness remains high, the response to the Governor's January 2014 call for a 20 percent reduction in water use has not met expectations, and in San Diego County, water use has actually gone up. There are a number of reasons for this, some of which are the subject of heated debate. Nevertheless, the fact remains that an estimated *60 percent* of urban water is used for landscapes.

The Water Conservation Garden encourages San Diegans to seize the opportunity to make meaningful and positive changes to landscape practices. Ask yourself a few questions: Are the plants in my yard adaptable to Southern California's climate conditions, requiring less water? Is my irrigation system operating effectively and efficiently? Am I watering during cooler hours to avoid water loss during hotter times of the day? Is it really necessary to wash driveways off with a water hose instead of sweeping?

We're in this drought together. Let's make a difference in our region's water use ethic.

John Bolthouse  
Executive Director

## New Board Member



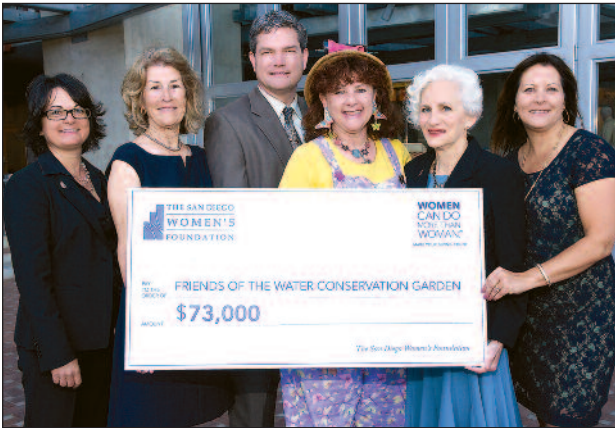
The Garden is pleased to welcome **Jan Tubiolo** as the newest member of its Board of Directors. Jan served as Water Conservation Manager for Otay Water District where, as manager for program development, she

chaired the task force that led to the founding of The Water Conservation Garden in the nineties. She managed the operations of The Garden from 1991 until retiring in 2001. Jan holds a degree in Horticulture from Cuyamaca College and is a volunteer landscape instructor for both The Garden and San Diego County Water Authority.

The Garden is thankful for ongoing support from the members of our Joint Powers Authority:



## San Diego Women's Foundation Shows Extraordinary Generosity



From L-R: SDWF Board Members Suzanne LaTour and Alexis Lasheras; WCG Executive Director John Bolthouse; Pam Meisner as WCG's Ms. Smarty-Plants; SDWF Board Member AJ Frank, and SDWF Executive Director, Tracy Johnson.

The Water Conservation Garden is pleased and honored to have been recently awarded a \$73,000 grant from the **San Diego Women's Foundation**. At its annual awards ceremony at the San Diego Central Library on May 29, the Foundation selected The Garden as one of eight nonprofits to receive funding during its 2014 grant cycle.

The funds that SDWF generously provided will enable The Garden to expand its award-winning "Ms. Smarty-Plants"™ youth education program to reach an additional 21,000 school-age children by 2016, showcase the program at national educators conferences, and fund a feasibility study to adapt the "Ms. Smarty-Plants"™ program as a television show for local stations. With this new funding, it is estimated that The Garden will be able to surpass the 60,000 milestone in schoolchildren reached annually.

The San Diego Women's Foundation educates and inspires women to engage in collective philanthropy in the San Diego community. Since 2000, the Foundation has granted \$2.7 million to over seventy nonprofit organizations. This is first grant awarded to The Water Conservation Garden by the Foundation.

# THE Enchanted Garden GALA

AT THE WATER CONSERVATION GARDEN

SATURDAY, OCTOBER 18, 2014 • 6:00PM TO 10:00 PM

Join us for a magical evening amidst our illuminated gardens as you delight in uncommon artistry in entertainment and exquisite, garden-inspired fare.

### Experience

- \* Aerialists and acrobats
- \* Enchanting, illuminated gardens
- \* Gourmet dinner and tasting stations
- \* Silent auction
- \* Program hosted by NBC 7's Dagmar Midcap

Proceeds benefit TheWater Conservation Garden's education programs and the creation of a new children's garden.

Tickets: \$150 per person  
TheGarden.org/gala

Seating is limited for this very special event

### Gala Sponsorship Opportunities

Contact Diane Owens, Events Director, at 619-660-0614, Ext. 17.

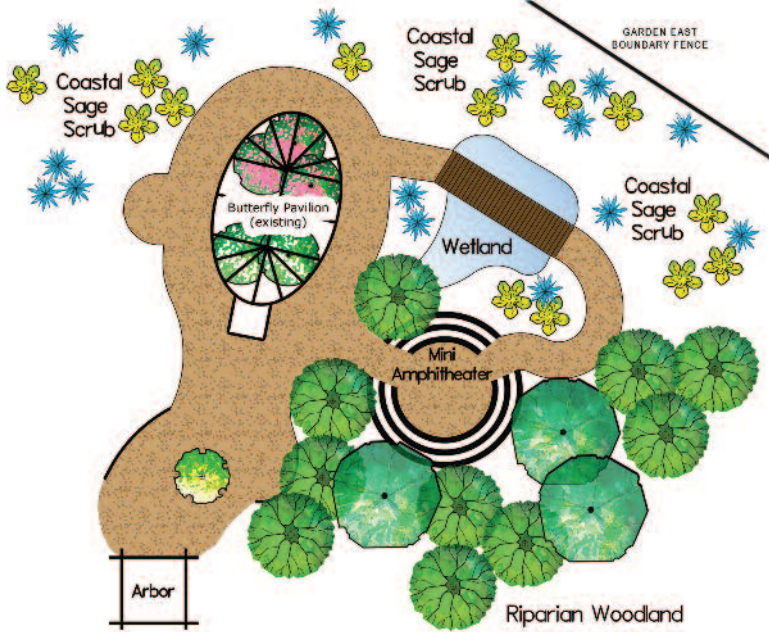


NBC 7'S DAGMAR MIDCAP  
EVENT EMCEE



# NEWS & EVENTS

## New Habitat Exhibit Coming in 2015



Due to generous financial and in-kind donations recently procured, the Habitat Garden planned to surround the Dorcus E. Utter Memorial Butterfly Pavilion is closer to becoming a reality.

This exhibit will include three kinds of habitat drawn from nature: riparian (streamside) woodland, a wetland basin, and coastal sage scrubland. These habitats are called plant communities, each representing a different suite of mostly native species and a different kind of habitat structure. Special attention will be given to plants that attract our local butterflies, but this diverse assemblage of plants and habitat types will also attract many bird species.

The Habitat Garden will utilize on-site water reclamation techniques to support the wetland basin and riparian woodland so that these higher water use areas actually need little to zero municipal water, making them not just water wise, but examples of leading edge water conservation techniques. Rooftop rainwater from nearby buildings will feed the wetland basin, a constructed wetland filled with beautiful wetland perennials. Greywater distributed underground will water the riparian trees. Coastal sage scrub composed of tough, drought tolerant species will demonstrate low water habitat landscaping.

A round mini-amphitheater will be placed within the shade of the riparian trees with a view to the Butterfly Pavilion. The mini-amphitheater will be used for educational talks and small public ceremonies, and will serve as an area for quiet repose for everyday visitors.

This exhibit is made possible by generous donations from **Helix Water District** (\$20,000) the **Rancho San Diego/Spring Valley Rotary Club** (\$5,300), and the **El Cajon Rotary Club** (\$3,000). In-kind materials donations come from **Village Nurseries**, and **Mountain State Nurseries**. **REC Engineering**, owned by Board President Elyssa Robertson, is generously donating the design and installation of the wetland basin.

## Recognizing Excellence in Voluntarism



Richard Wright (left) Winner 2014 Dorcas E. Utter Award

For over ten years, **Richard Wright** has dedicated his time and talents to The Water Conservation Garden as a Garden Docent, committee chair, Board member, and ambassador of The Garden in the community. Richard also served as President of the Board, having played an important leadership role during The Garden's transition to an independent non-profit organization in 2011-2012. And he is one of The Garden's strongest benefactors, conveying a spirit of philanthropy he strives to instill in others.

In recognition of his leadership, current Board President **Elyssa Robertson** (above right) presented Richard a special plaque on behalf of the entire Board of Directors. In June, The Garden named Richard recipient of the 2014 Dorcas E. Utter Award for Extraordinary Service, nominated and selected unanimously by fellow volunteers and staff. Named for the beloved founder of The Garden's volunteer program, the Dorcas E. Utter Award for Extraordinary Service is given annually to the person who exemplifies the highest levels of loyalty and commitment to The Garden and its mission. Richard joins the following esteemed volunteers who have been recipients:

- |                         |                       |
|-------------------------|-----------------------|
| Mary Bear (2005)        | Cynthia Cramer (2010) |
| Sue Chambers (2006)     | Vince McGrath (2011)  |
| Sue Ellen Benson (2007) | Anne Mayer (2012)     |
| Meredith Hattrup (2008) | Whitney Duarez (2013) |
| Rosalie Dosik (2009)    |                       |

## CONGRATULATIONS

to Pam Meisner, The Garden's Education Director, for being recognized by the International Women's Leadership Association as an outstanding leader for her contributions to family, career and community.



The Garden has secured approximately 75% of the funds necessary. Want to Support the Habitat Garden? Contact the Executive Director John Bolthouse at 619-660-0614 x 11.



## Converting to Beauty



New Zealand Flax, Mexican Feathergrass, Aloes, Aeonium, and Kangaroo Paw are some of the plants pictured in Yen Tu's lovely water-saving landscape.

Recently, The Garden caught up with **Yen Tu**, Board Member at the San Diego County Water Authority, to learn more about her wonderful drought-tolerant landscape that replaced humdrum and too-thirsty grass that required regular mowing.



Yen's family regularly enjoys this outdoor living space that has replaced thirsty grass and plants.

Armed with the knowledge that up to 70% of a household's water budget is used outdoors, and eager to expand their conservation efforts, Yen and her family took the plunge in 2012 to make their landscape less water-dependent and ended up making it infinitely more beautiful in the process.

After spending a day at The Water Conservation Garden, and making note of the various plants and landscape styles that appealed to her, Yen employed the help of a landscape designer friend whose own love of native plants influenced Yen's plant choices. "My visit to The Garden and my friend's love of native plants really inspired me to choose plants that are both beautiful and that belong and thrive in San Diego," said Yen. "I was even able to choose fruit-bearing trees that require little water once established – delicious pomegranate and fig." In addition to adding attractive drought-resistant plants to her front yard, Yen created an outdoor living space that her family regularly spends time in.

Many benefits have been realized in the process of Yen's conversion to a drought-tolerant landscape. To start, Yen took advantage of rebates for turf replacement, a smart meter, and an irrigation system and received over \$2,000 in reimbursements from the City of San Diego. One year after installing her new landscape, Yen realized a 20 percent reduction in the amount of water applied to her yard. A year later, when the plant material was more established, Yen saw an additional 20 percent in water savings from the first year.

Yen's neighbors started paying attention too. Since changing her landscape, people have remarked how beautiful her yard is, and some have begun converting their own water-thirsty yards into beautiful landscapes that are also water-wise without compromise!

## WHEN IN DROUGHT

Save every day, every way.

[whenindrought.org](http://whenindrought.org)

## Thank You for Doing a Great Job SAVING WATER

California is experiencing a statewide drought. Saving more water now helps our region by keeping more water in storage for use if the drought continues next year.

### Here's how you can help:

- Stop inefficient irrigation: eliminate overspray and runoff, and water landscapes only in early morning or late evening
- Minimize outdoor water waste: use a broom to clean paved surfaces and an automatic shut-off valve on hoses; wash vehicles at commercial sites that reuse water
- Fix leaky toilets, faucets and irrigation lines promptly



Make your water dollars go even further, take advantage of free programs, rebates and tools at [WaterSmartSD.org](http://WaterSmartSD.org).



San Diego County Water Authority

Sponsored by the San Diego County Water Authority and its 24 member agencies

# CLASSES AND EVENTS: SUMMER & FALL

PRE-REGISTRATION required for all class participants at [www.thegarden.org](http://www.thegarden.org) or by calling 619-660-0614 x10.

## AUGUST



### Say Cheese! Making Cheese, That Is!

Wednesday, August 13th, 6:00pm - 8:00pm

Spend a delicious summer evening with Don Axe of Valley View Farms making (and tasting) a variety of cheeses from locally-sourced goat's milk.

Members Free, \$10 Non-Members

## SEPTEMBER



### Hillside Gardening

Saturday, September 13th, 10:00am - 12 noon

Yes, you can have a lovely garden on a hillside! Professional landscape designer Connie Beck teaches you the tricks of planting on a slope.

Members Free, \$10 Non-Members



### Firescaping with Native Plants

Saturday, September 20th, 10:00am - 12 noon

Learn fire-wise landscaping essentials using native plants with landscape designer and gardening book author, Greg Rubin. This important presentation explores native plant choices, proper plant placement, and native plant care.

Members Free, \$10 Non-Members

## OCTOBER



### Soil Testing, Prepping and Planting

Saturday, October 4th, 10:00am - 12 noon

An important aspect of healthy landscapes and gardens is the soil. Join Harold Bailey for a hands-on workshop to learn how to test your soil, how to prepare it for planting, and the proper use of fertilizers.

Members Free, \$10 Non-Members



### Enchanted Garden Gala

Saturday, October 18th, 6:00pm - 10:00pm

Join us for a magical evening amidst our illuminated gardens as performance artists delight you with uncommon artistry in entertainment, and tasting stations overflow with garden-inspired fare. A silent auction, featuring unique "must-haves", will be followed by a gourmet seated dinner in our outdoor dining room, and a dynamic live program hosted by NBC 7's Dagmar Midcap. Reserve limited-availability tickets at [www.thegarden.org/gala](http://www.thegarden.org/gala).



### Fall Docent Training Program

Saturdays, October 25th & November 1st

Utilize your skills and talents to contribute to The Garden's success! There are many ways to get involved and wonderful new people to meet. Applicants to the docent training program must be current members of The Garden to participate. **For more information, please contact Pam Meisner, Education Director, at [pam@thegarden.org](mailto:pam@thegarden.org) or 619-660-0614 x13.**

## NOVEMBER



### "Ask the Experts" Mini Expo

Saturday, November 15th, 9:00am - 2:00pm

Take a free home compost workshop, join our popular "Toss the Turf" class (see entries that follow), learn about money-saving landscape rebates, or spend 20-minutes with a professional landscape designer to discuss how to implement your own water-saving landscape. Landscape design appointments are just \$15 for 20 minutes, and pre-registration is recommended by calling 619-660-0614.



### Toss the Turf

Saturday, November 15th, 10:00am - 12 noon

More Beauty, Less Water, More Fun! Learn how to remove your turf (lawn) evaluate your soil, and tune up your irrigation system so that you can convert a thirsty landscape into a beautiful, water-saving landscape.

Members Free, \$10 Non-Members

# CLASSES AND EVENTS: SUMMER & FALL

All participants: Pre-registration is required for all classes at [www.thegarden.org](http://www.thegarden.org) or by calling 619-660-0614 x10.

## NOVEMBER



...continued

### Home Compost Workshop *Free!*

Saturday, November 15th, 10:00am - 12 noon

The Solana Center offers a free workshop on the basics of composting! Compost bins will be sold at subsidized prices for Unincorporated County residents; please bring ID and cash or check only. Register at [solanacenter.org](http://solanacenter.org) or by calling 760-436-7986, x222.

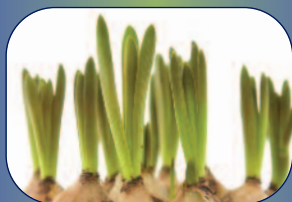
Register early; limited to 20 participants.

### Bulbs, Beautiful Bulbs!

Saturday, November 8th, 10:00am - 12 noon

Join The Garden's Director of Horticulture and Exhibits, Clayton Tschudy, in an exploration of bulbs from Mediterranean climates around the world. You'll get to help plant Pacific Coast Irises in the Garden's meadow, and learn how to divide iris corms for replanting.

Members Free, \$10 Non-Members



## ONGOING PROGRAMS



### Butterfly Pavilion

Visit the Dorcas E. Utter Memorial Butterfly Pavilion for butterfly encounters from April 1-September 30. During the week, pavilion visits are offered on the hour from 9am-12pm. On Saturday and Sunday, pavilion visits are offered any time from 9:00am-3:00pm. **Entry is by suggested donation.**



### FREE Garden Tours – Every Saturday at 10:30am

Tour the lush, charming, and water-wise Garden with a knowledgeable docent to hear what makes our garden special. Be inspired to create a water-wise landscape of your own. Check our website for a listing of monthly themed tours.



### FREE Special Access Tour – Every Third Sunday at 10:30am

Have trouble navigating the terrain of The Garden? Let us take you for a ride! Explore The Garden from the comfortable Verbeck Shuttle with a Garden Docent. This tour seats only 4-5 people.

**Advanced reservations required. Call 619-660-0614 x16.**



### Professional Landscape Design Consultations

Spend 45 minutes one-on-one with a professional landscape designer and leave with a basic design plan and list of suggested plants for your own drought tolerant landscape. Bring a photo of your house, a list of areas you want to re-design, the dimensions of the space, and photos of design styles you love. **Call 619-660-0614 x10 for appointment availability, designer information and reservations. Members \$60, Non-Members \$75**



### Ms. Smarty-Plants™ School Tours and Assembly Program

Calling all kids groups! Join Ms. Smarty-Plants™ as she magically takes you on a fun, interactive journey through plant adaptations, the water cycle, conservation, and much more. **Become a Ms. Smarty-Plants™ Earth Hero! To book an educational tour of The Garden or a school assembly program, contact Education Assistant Jillian Chu at 619-660-0614 x16.**

# EDUCATION



1.



2.

1. Ms. Smarty-Plants™ and her newly recruited "Earth Hero" at the 2014 Children's Water Education Festival in Irvine, CA.
2. The inaugural 2014 Butterfly Festival in April was a roaring success with 5,200 visitors attending, making it a record-breaker for attendance in the history of The Garden's public events. Throughout the day, children learned about the fascinating butterfly lifecycle. Pictured here is Education Specialist Jillian Chu (center) in the role of "Miss Metamorphosis", as she and a group of children gather in costume prior to embarking on the "Pollinator Parade".
3. Thanks to the generosity of SDG&E, 100 4th-graders from Fuerte Elementary School in El Cajon, CA attended a Ms. Smarty-Plants™ field trip at The Garden. The students pictured here learned just how many bottles of water are consumed in a 5- minute shower, and became more aware of saving water in their everyday lives.
4. Thanks to all who supported The Garden during the CBS 8 Eco Ambassador finals. You voted for us a total of 6,902 times, and helped us win \$2,000 for our Ms. Smarty-Plants™ education programs! And, thanks to CBS 8/Earth 8, SDG&E and The San Diego River Park Foundation for showcasing some of San Diego's most dynamic environmental education programs that create sustainable, greener and cleaner neighborhoods.
5. Students from Davila Day School learn what it's like to be a Monarch butterfly.

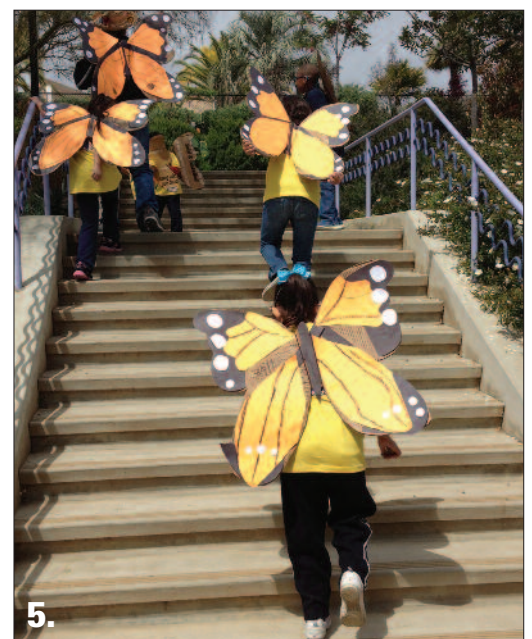


3.

From Jan-June this year, Ms. Smarty-Plants™ spread her conservation message to 49,379 children and adults!



4.



5.



## Creating a Winter Wonderland in San Diego



1.



2.



3.

1. Silktassel (*Garrya elliptica*) 2. Oxblood Lily (*Rhodophiala bifida*) 3. African Boxwood (*Myrsine africana*)

During the holidays, many in southern California begin pining for the missing seasons and for snow and fall color. But you can bring the stark red, white, and evergreen palette of the winter high country into your San Diego drought tolerant landscape with a little help from The Water Conservation Garden. And best of all, while this garden will look great all year, its fall/winter character is seasonal, coming online just in time for the holidays.

### The Evergreen Backbone

The dark green, waxy leaves of holly are the touchstone qualities against which holiday evergreens must compare. At least 50 percent of your holiday garden should be comprised of evergreen shrubs whose stable character will hold the space together year round.

African boxwood (*Myrsine africana*) is the lower water alternative to traditional boxwood. It can be shaped and hedged to frame a small garden space, or turned into a miniature topiary tree.

California hollywood or toyon (*Heteromeles arbutifolia*) is a native with dark green and scalloped leaves, and sprays of red berries that last into winter.

Cotoneaster is a large group that produces red winter berries. Some are evergreen while others have striking maroon fall foliage.

### Winter Reds

Deciduous shrubs turning red for winter, blood-red bulbs adapted to southern climates, winter-blooming perennials, and red berry producing shrubs – there is an abundance of low-water winter reds available to give your holiday garden a shot of rich, seasonal color. The following choices are great for the yuletide garden.

Paradise manzanita (*Arctostaphylos pajaroensis*) responds to an early fall pruning by producing vibrantly red new foliage in winter.

Heavenly bamboo (*Nandina domestica*) thrives in sun and shade, developing crimson tones in cold weather.

Aloes (*A. arborescens* [pictured on cover], *A. ferox*, *A. marlothii*, *A. striata*, and others) are reliable December bloomers. When blended with evergreens and leafy perennials, they create a distinctly mediterranean climate blend. Be sure to get red blooming selections.

Oxblood lily (*Rhodophiala bifida*) and *Amaryllis belladonna* are late summer/fall blooming bulbs that come in deep red colors.

### Special Effects

Certain plants invoke a place or season for people, either because of cultural associations, or because they seem to mimic other natural phenomena. All of these plants are spectacular when cared for correctly, and each says winter in their own way.

Winter-blooming poinsettia (*Euphorbia pulcherrima*) is easy to grow in San Diego. To force Christmas bloom, starting in November, throw a blanket over the plant at night, and don't remove until morning. The extra hours of darkness will stimulate early bloom.

For a snow-in-the-chaparral effect try *Mublenbergia capillaris* "White Cloud" or a female flowering coyote brush, *Baccharis pilularis consanguinea*, which will create mounds of snow-white fluff starting in October.

Silktassel (*Garrya elliptica*) lives up to its name, appearing covered in Christmas tree-like tassels when in winter bloom.

California's fresh fig season starts in mid-May and continues through mid-December, providing ample opportunities to enjoy this tantalizingly sweet fruit in a variety of recipes, such as the appetizer shown here. Growing fig trees in California is relatively easy to do, as the trees love our warm mediterranean climate and require little water once established. It is interesting to note that botanically, figs are not actually fruits- rather, they are hundreds of miniscule flowers encased in fleshy, balloon-like casing.



## FLAVORS OF THE GARDEN

*Figs Stuffed with Gorgonzola and Walnuts*

Recipe courtesy *Cook Like a Rockstar* by Anne Burrell

### INGREDIENTS

12 Black Mission, Brown Turkish, or (in a pinch), dried figs  
High-quality balsamic vinegar  
Kosher salt  
8 oz Gorgonzola Dolce cheese, at room temperature  
½ cup Walnuts, quartered and toasted

### DIRECTIONS

1. Preheat the oven to 350 °F.
2. Slice the figs in half lengthwise, place them on a baking sheet, and dig a little hole in the middle. Drizzle the fig halves with 2 or 3 drops of balsamic vinegar and sprinkle with salt.
3. Fill each fig with Gorgonzola and top with a quarter of a walnut. Bake for 5 minutes or until the cheese is melted and bubbly.

# IN THE GARDEN

## Celebrating Our Volunteers

**NOW THAT'S DEDICATION!**

Most people understand that nonprofits rely on volunteer efforts to support ongoing operations and programs, but just how big of an impact do they make?

The Garden's volunteers make an enormous impact! In the 2013-14 Fiscal Year, Garden docents and volunteers contributed over 5,700 hours of their time, representing \$114,000. Since 2008, volunteers have contributed a combined total of 23,500 hours, valued at \$470,000!



Fun-loving garden docents Jill and Gaylord Norcross put on their country best for the "Down on the Farm"-themed docent recognition dinner held in June.



**REMINDER!** Visit The Dorcas E. Utter Memorial Pavilion through the end of September before the butterflies go away for the season! Hours: M-F, 9am-12pm with visits on the hour; Sat. & Sun, 9am-3pm, with visits throughout the day.

### **Holiday Gift Shop Open House Saturday, December 6, 9am-4pm**

Join us for a day of shopping surrounded by holiday ambience in The Garden's Gift Shop. Enjoy great prices on unique garden-inspired gifts that you won't find anywhere else, plus special day-of-event only discounts and delicious holiday treats.



### **FALL DOCENT TRAINING PROGRAM**

**SATURDAYS: OCTOBER 25TH & NOVEMBER 1**

Utilize your skills and talents to contribute to The Garden's success! Lead tours of our venue, help maintain the landscape, volunteer with special events or help with retail in the Gift Shop. There are many ways to get involved and wonderful new people to meet. Applicants to the docent training program must be current members of The Garden to participate.

For more information, please contact Pam Meisner, Education Director, at [pam@thegarden.org](mailto:pam@thegarden.org) or 619-660-0614 x13.

# FOCUS ON PHILANTHROPY

## New Members March – June 2014

Joshua & Taver Alkire  
Bernadette Alwendra  
Lance Anderson  
Paulette Bacling  
Patricia Baird  
Betty Balo  
James Barber Family  
Anna May Barrera  
Gloria J. Barry  
Jim & Ruth Batman  
Sharon Bendall  
Paulette Biggs  
Shelley Boswell-Gutting  
Sean & Alicia Branam  
Jordan Briley  
Ann Burgess  
Andrew Butterfield  
Peter & Melody Campbell  
Debbie & Ken Carreno  
Debbie Caudle  
Gerald Chiles & Marilyn White  
Mei & Andrea Christensen  
Tom & Mara Cooke  
Catherine Corral & Scott Desrosiers  
James Daniels & Melissa Disney  
Erik & Robyn Davis  
Hetty de Jong  
Frances Douglass  
Steve Duck & Lori Mathios  
Lucia Edmondson  
Cindy Emerson & Gary Doyle  
Carol Emery-Hamlin  
Nancy & Shirley Fairbanks  
Jean & Jamie Foti  
Jeff & Jana Freeman  
Ashley Frye Family  
Bill Gaedke  
Mary Garcia & Rebecca Escalante  
Leslie Gardner  
Paul Geldbach & Carey Hultgren  
Shelley Gilbert  
Judy Glasgo  
Pamela Glover  
Bill Grolz & Janet Garvin  
Judy Gwinnup & Terry Dickinson  
Stephen Haase  
Penelope Hamel  
Diana Hardy  
Jackie Herbert & Susan Mohney  
Robert Herrmann  
Saundra Holloway & Kevin Greco  
Dan Kjonegaard & Rebecca  
Susannah Koffman  
Lakeside Garden Club  
Maureen Lamberti  
Erica Lawson & Tad Gallistel  
Katherine Leicht  
C.K. Lennon & Sara Appel-Lennon  
Cathy Long  
Renee Mattos  
Grace McCormack  
Kristin McGregor

Pam McMakin  
Leslie McNabb & Sheldon Whalin  
Pat Meacham  
Melissa Kramar & Dominic and Roman Smith  
Katherine Mertes  
Julie Monteaux  
Carole Morales  
Eileen Myster  
Laura Nelson  
Sue Nelson  
Larry & Susan Nichols  
Kurt Norton & Angelica Robles  
Jason Page  
Karen Pearlman  
Jim & Suzie Pearson  
Kerry Perkins  
Liana Podhorn  
Fred & Maryann Powell  
Chuck & Cheryl Pryatel  
James Pyle  
Dennis & Vanessa Ramsey  
David Raney  
Joe Ravenia Family  
REC Consultants, Inc.  
Andrew & Jody Riley  
Cindy Rittershofer  
Vicki Robinson  
Bruce & Darlene Roland  
Mary Kay Rosinski  
Ryan & Juli Ruff  
Warren Savage & Barb Leetch  
Cindy Schmidt  
Ivan Smith  
Noel Sons  
Joyce Spicer  
Nancy Stassinopoulos  
Robin Stern  
Jan Stollenwerr  
Charlene Sturm  
Beverly Sylvester  
Norman & Dolly Tancioco  
Janice Tatro  
Arleen Tavalares  
Terry Thiesen & Cookie Sullivan  
Irma Timmons  
Mary Todd  
Steve & Bonnie Turner  
Candy Vanderhoff  
Michael & Tiffany Via  
Axelle Villanueva Family  
Judi Walton  
Abi Weisman & Melissa James  
Kathy Wellbrock  
Kalisa Wells  
Rod Whitlow & Linda Rankin  
Etta Wilson  
Jude Wolinsky  
Michael Wood  
Suzanne Yale & Karie Bearup

## The following donors generously contributed to The Garden during March-June 2014

### \$1,000 and above

Sue Ellen & Jack Benson  
El Cajon Rotary Club  
Hunter Industries  
Jasmine Creek Florist  
Jim & Sally Long  
NBC 7

Rancho San Diego/Spring Valley Rotary Club  
REC Consultants, Inc.  
San Diego County  
San Diego Women's Foundation  
SDG&E  
The Wynne Family

### \$500-\$999

Nancy Kaye  
Richard & Susan Namba  
Sprites of East County, Inc.  
Frank & Maureen Stapleton

### \$100-\$499

Anonymous  
Rosalie & Paul Dosik  
Michelle LaGrandeur  
Lethal Sound, Inc.  
Cindy & Gabe Miles  
Jim & Cheryl Minshew  
US Bank  
Richard Wright

### \$5-\$99

Joann Livingston  
Frederica M Luke  
Kay & Vince McGrath  
Ninyo & Moore  
David & Sandra Polster  
Marilyn Shea  
Joe and Connie Via

## New Friends of the Butterflies

Jeraldine Scofield  
Frances Thiercof

## The Garden thanks the following Corporate Members for their ongoing support:

Backflow Services  
Baldwin & Sons  
Bennett & Associates  
City of San Diego  
Helix Water District  
Hunter Industries  
Nolte Associates

Otay Water District  
San Diego County Water Authority  
SDG&E  
REC Consultants, Inc.  
Resource Conservation District of  
Greater San Diego  
Sweetwater Authority

For more information on Corporate Membership, please visit [www.thegarden.org](http://www.thegarden.org) or contact the Executive Director at 619-660-0614 x11.

**Editors Note:** As of this issue, *In Bloom* has expanded to 12 pages of content to bring you exciting updates about The Garden, horticulture, and, of course, water conservation. *In Bloom* will now be published three times per year, rather than quarterly, and Garden members will continue to receive the publication delivered to their U.S. Postal Service mailboxes. *In Bloom* may also be enjoyed from The Garden's website, and from our Facebook page and Twitter feed.

Forwarding Service Requested



A Newsletter of The Water Conservation Garden  
Summer 2013  
Volume 3, Number 3  
www.thegarden.org

ADVERTISE WITH US!

Reach audiences interested in gardening and sustainability by advertising with *In Bloom*, which has a quarterly print circulation of 2,500 copies.

For more information, contact Director of Marketing Elizabeth Ramos at [elizabeth@thegarden.org](mailto:elizabeth@thegarden.org) or 619-660-0614, x14.



## GREAT MEMBER BENEFIT!!

Garden members now receive a 10-15% discount on all purchases at the following partner nurseries. A current membership card must be presented at the time of purchase.

- **Barrels & Branches Nursey** – Encinitas ([www.barrelsandbranches.com](http://www.barrelsandbranches.com))
- **Cedros Gardens** – Solana Beach ([cedrosgardens.com](http://cedrosgardens.com))
- **Gardens by the Sea** – Leucadia ([gardensbytheseanursery.com](http://gardensbytheseanursery.com))
- **Hunter's Nursery** – Lemon Grove ([huntersnursery.com](http://huntersnursery.com))
- **Kniffing's Discount Nursery** – Alpine ([kniffingsnursery.com](http://kniffingsnursery.com))
- **Mission Hills Nursery** – Mission Hills ([missionhillsnursery.com](http://missionhillsnursery.com))
- **Rancho Valhalla Nursery** – El Cajon ([ranchovalhallanursery.com](http://ranchovalhallanursery.com))

For more information on Garden membership, visit [www.thegarden.org](http://www.thegarden.org).